

Collections



HELMET

<https://collections.galtmuseum.com/en/permalink/artifact941>

Other Name: FIRE BRIGADE
Date Range From: 1910
Date Range To: 1920
Material Type: Artifact
Materials: BRASS, LEATHER, WOOL
Catalogue Number: P19641362000



BADGE, POLICE

<https://collections.galtmuseum.com/en/permalink/artifact2089>

Date Range From: 1908
Date Range To: 1920
Material Type: Artifact
Materials: BRASS
Catalogue Number: P19672564007



LANTERN, KEROSENE

<https://collections.galtmuseum.com/en/permalink/artifact2423>

Other Name: SIDE-LIFT TUBULAR TYPE
Date Range From: 1910
Date Range To: 1920
Material Type: Artifact
Materials: GLASS, CHROMED METAL
Catalogue Number: P19739474000



UNIFORM, POLICE

<https://collections.galtmuseum.com/en/permalink/artifact5067>

Other Name: R.N.W.M.P. SUSPENDERS
Date Range From: 1908
Date Range To: 1920
Material Type: Artifact
Materials: LEATHER, COTTON, STEEL
Catalogue Number: P19672564005



UNIFORM, POLICE

<https://collections.galtmuseum.com/en/permalink/artifact5065>

Other Name: R.N.W.M.P. SAM BROWNE BELT
Date Range From: 1908
Date Range To: 1920
Material Type: Artifact
Materials: LEATHER, BRASS
Catalogue Number: P19672564003



BADGE

<https://collections.galtmuseum.com/en/permalink/artifact8060>

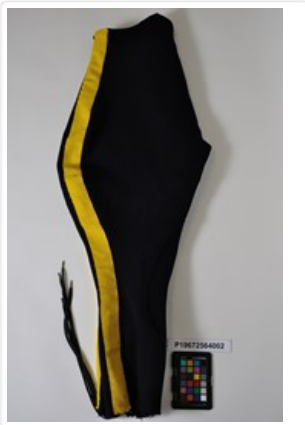
Other Name: CAP BADGE
Date Range From: 1919
Date Range To: 1945
Material Type: Artifact
Materials: NICKEL
Catalogue Number: P19970094010



LANTERN, KEROSENE

<https://collections.galtmuseum.com/en/permalink/artifact2422>

Other Name: SIDE LIFT TUBULAR TYPE
Date Range From: 1910
Date Range To: 1920
Material Type: Artifact
Materials: GLASS, CHROMED METAL
Catalogue Number: P19739463000



UNIFORM, POLICE

<https://collections.galtmuseum.com/en/permalink/artifact5064>

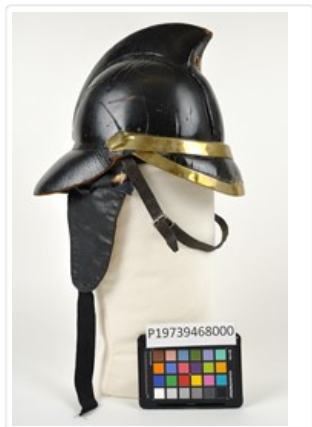
Other Name: R.N.W.M.P. BREECHES
Date Range From: 1908
Date Range To: 1920
Material Type: Artifact
Materials: WOOL, COTTON
Catalogue Number: P19672564002



UNIFORM, POLICE

<https://collections.galtmuseum.com/en/permalink/artifact5066>

Other Name: R.N.W.M.P. BOOTS
Date Range From: 1908
Date Range To: 1920
Material Type: Artifact
Materials: LEATHER, COTTON
Catalogue Number: P19672564004



HELMET

<https://collections.galtmuseum.com/en/permalink/artifact625>

Other Name: FIRE BRIGADE
Date Range From: 1910
Date Range To: 1920
Material Type: Artifact
Materials: BRASS, WOOL, LEATHER
Catalogue Number: P19739468000



HYDRANT

<https://collections.galtmuseum.com/en/permalink/artifact3739>

Other Name: FIRE HYDRANT OR FIREPLUG
Date Range From: 1900
Date Range To: 1920
Material Type: Artifact
Materials: CAST IRON
Catalogue Number: P19870004000



RIFLE, REPEATING

<https://collections.galtmuseum.com/en/permalink/artifact8736>

Other Name: REMINGTON MODEL 12 .22 CAL E (SMITH & WESSON)
Date Range From: 1910
Date Range To: 1920
Material Type: Artifact
Materials: STEEL, WOOD
Catalogue Number: P19980037003



UNIFORM, POLICE

<https://collections.galtmuseum.com/en/permalink/artifact629>

Other Name: R.N.W.M.P. SERVICE CAP
Date Range From: 1908
Date Range To: 1920
Material Type: Artifact
Materials: LEATHER, COTTON TWILL, FELT
Catalogue Number: P19672564006



BADGE

<https://collections.galtmuseum.com/en/permalink/artifact2065>

Other Name: LETHBRIDGE FIRE DEPARTMENT
Date Range From: 1900
Date Range To: 1910
Material Type: Artifact
Materials: RIBBON, NICKEL / NICKEL-PLATE
Catalogue Number: P19780059000



BADGE, FIREMAN'S

<https://collections.galtmuseum.com/en/permalink/artifact2064>

Other Name: CAP (UNIFORM) (3)
Date Range From: 1900
Date Range To: 1977
Material Type: Artifact
Materials: NICKEL / NICKEL-PLATE
Catalogue Number: P19780058000



REVOLVER

<https://collections.galtmuseum.com/en/permalink/artifact1467>

Other Name: COLT NEW POLICE 38
Date Range From: 1905
Date Range To: 1915
Material Type: Artifact
Materials: STEEL (BLUED), BAKELITE
Catalogue Number: P19820015000



BADGE, POLICE

<https://collections.galtmuseum.com/en/permalink/artifact2040>

Other Name: COLLAR BADGE R.N.W.M. POLICE
Date Range From: 1904
Date Range To: 1920
Material Type: Artifact
Materials: BRASS
Catalogue Number: P19738911000



UNIFORM, POLICE

<https://collections.galtmuseum.com/en/permalink/artifact877>

Other Name: R.N.W.M.P. TUNIC
Date Range From: 1908
Date Range To: 1920
Material Type: Artifact
Materials: WOOL, BRASS, COTTON
Catalogue Number: P19672564001



BADGE

<https://collections.galtmuseum.com/en/permalink/artifact11686>

Other Name: ALBERTA PROVINCIAL POLICE SHOULDER TITLE
Date Range From: 1917
Date Range To: 1932
Material Type: Artifact
Materials: ALUMINUM, BRASS
Catalogue Number: P20020090002



BADGE

<https://collections.galtmuseum.com/en/permalink/artifact13302>

Other Name: A. P. P SHOULDER TITLE
Date Range From: 1919
Date Range To: 1932
Material Type: Artifact
Materials: ALUMINUM, BRASS
Catalogue Number: P20180014001